

Adding Kap Nordic Skiers and snowshoe trails to Avenza

For Apple device.

-Go to App Store and download Avenza maps



-Download map from our website <http://www.kapnordicskiers.com/trail-maps.html>



-Once map is downloaded press the “send to icon” at the bottom of your screen and send to Avenza.



-A blue dot should appear on the map to show your location in the trails. If not make sure location services are turned on in your phone settings/Privacy/location services. Choose avenza app and turn on Location services.

For android (ex; Samsung)

-Go to Play Store and download Avenza maps.

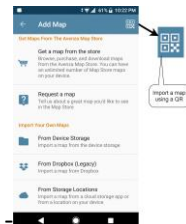


-Download map from our website <http://www.kapnordicskiers.com/trail-maps.html>



-In Avenza click on the + sign to add map

-Choose option “Download or import map”



-Make sure location is turned on in Settings/apps/avenza